

# Monument Square

SALES CENTER  
5200 Block of Monument Avenue  
Richmond, Virginia 23226  
p. 804-288-2680  
f. 804-288-2681

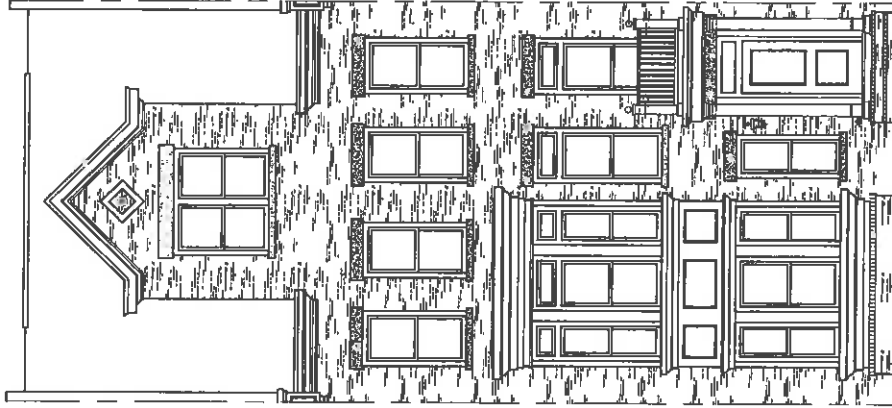
[www.monumentstyle.com](http://www.monumentstyle.com)



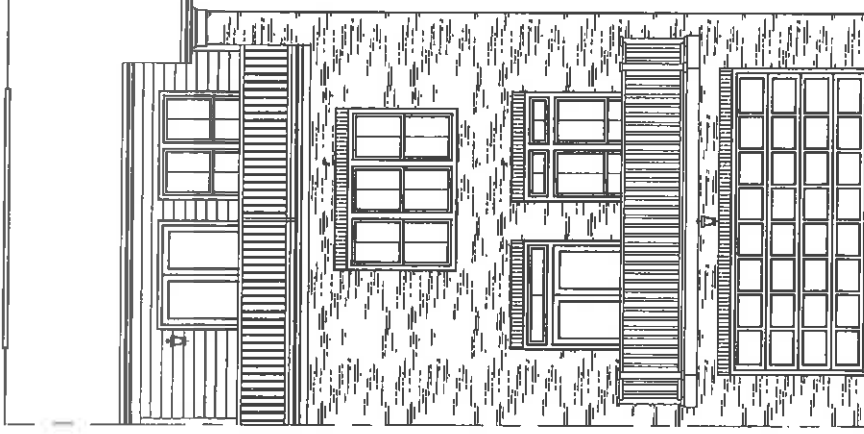
**Cumenick**  
PROPERTIES

These materials and the features/amenities described and depicted herein are based upon current development plans, which are subject to change at any time based on market conditions, availability and architectural revisions.

10.20.09



Front

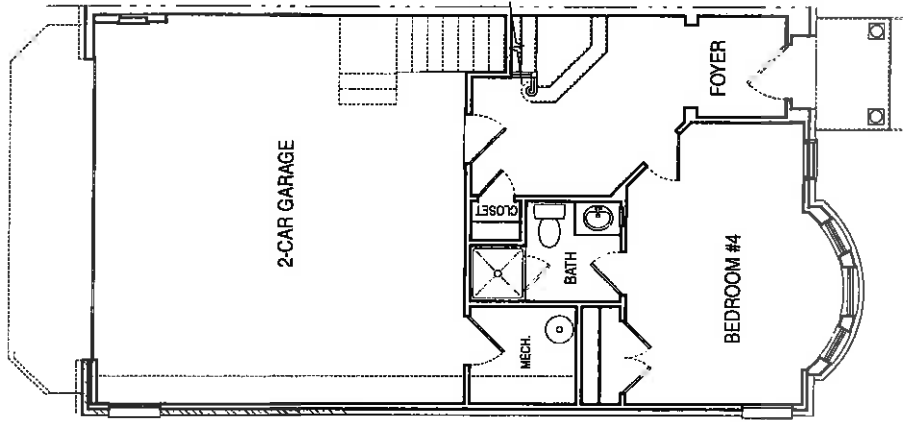


Rear

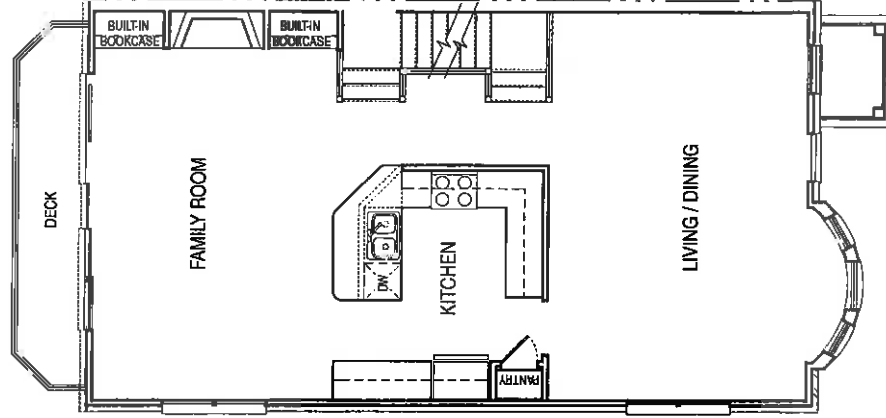
# THE MORRIS

Approximately 2,730 square feet

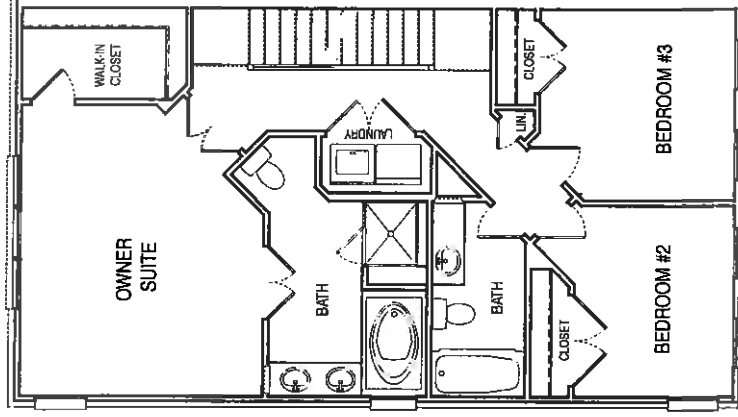
LOT 67 ~ ELEVATION C5  
1207 Byrd Avenue



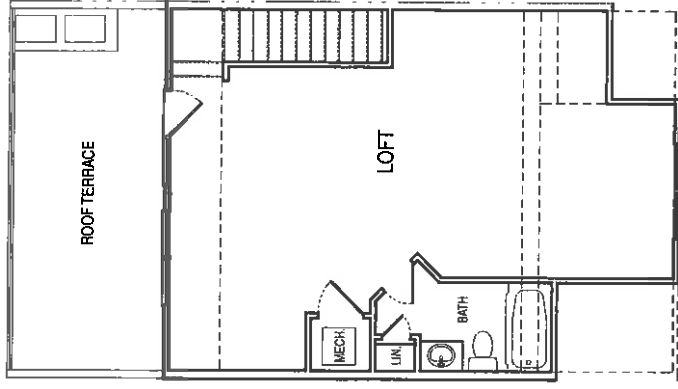
Ground Floor



2nd Floor



3rd Floor



Loft

# THE MORRIS

1207 Byrd Avenue ~ LOT 67 ~ ELEVATION C5