

Monument Square

SALES CENTER
5200 Block of Monument Avenue
Richmond, Virginia 23226
P. 804-288-2680
F. 804-288-2681

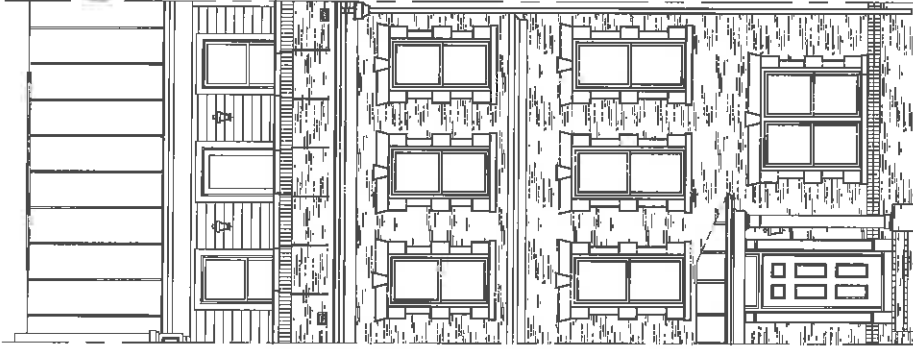
www.monumentstyle.com



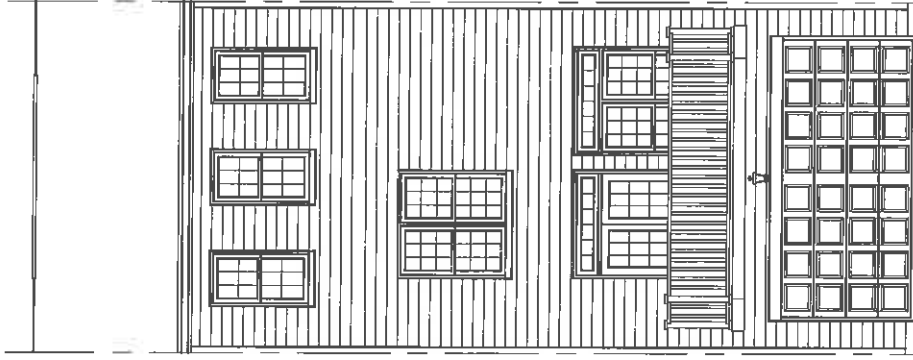
Crumenick
PROPERTIES

These materials and the features, amenities described and depicted herein are based upon current development plans which are subject to change at any time based on market conditions, availability and architectural revisions.

10.20.09



Front

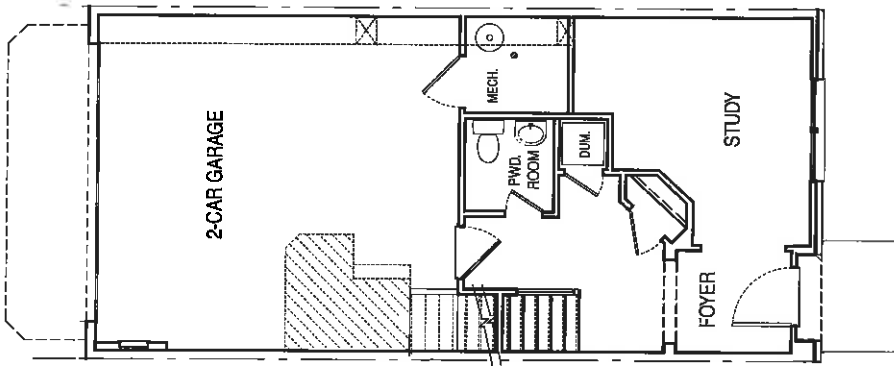


Rear

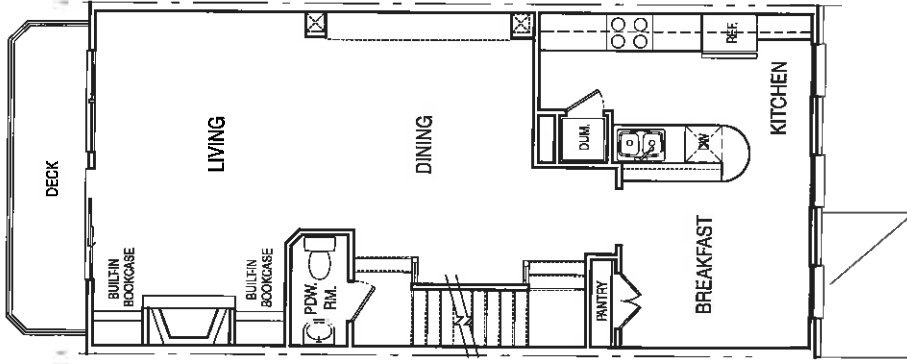
THE LINDEN

Approximately 2,400 square feet

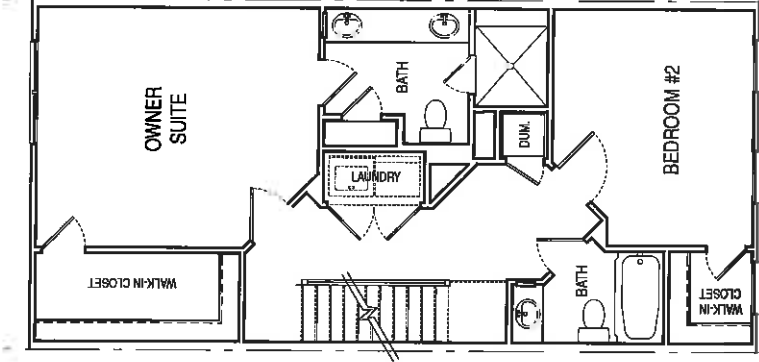
LOT 49 ~ ELEVATION B2
1213 Byrd Avenue



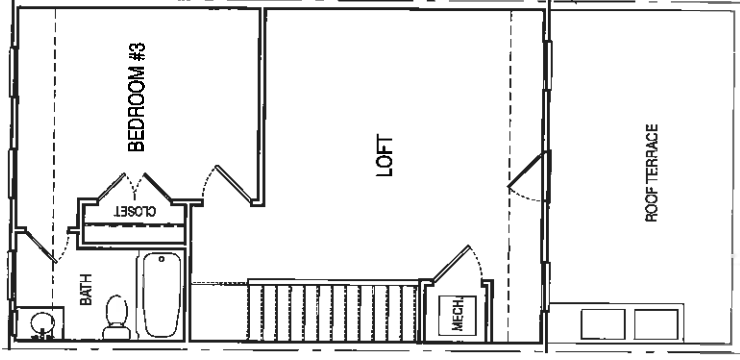
Ground Floor



2nd Floor



3rd Floor



Loft

THE LINDEN

1213 Byrd Avenue ~ Lot 49 ~ ELEVATION B2



Crumenick
PROPERTIES

10.20.09 These materials and the features/amenities described and depicted herein are based upon current development plans, which are subject to change at any time based on market conditions, availability and architectural revisions.